

# Site Searcher

User Guide

## Table of contents:

1	Introduction .....	3
2	Installation procedure .....	4
3	Site Searcher Interface .....	7
4	Performing the search .....	8
4.1	Setting the search options (Settings) .....	8
5	Interpreting the results .....	9
6	Using the Results Tool option .....	10

## List of figures

Figure 1: Installation procedure (step 1/5) .....	4
Figure 2: Installation procedure (step 2/5) .....	5
Figure 3: Installation procedure (step 3/5) .....	5
Figure 4: Installation procedure (step 4/5) .....	6
Figure 8: Installation procedure (step 5/5) .....	6
Figure 9: Site Searcher Interface .....	7
Figure 10: Performing the search .....	8
Figure 11: Interpreting the results .....	9
Figure 12: Using the "Results Tools" menu .....	10
Figure 13: Using the file menu .....	11
Figure 14: Using the shortcuts .....	11

# **1 INTRODUCTION**

The “Site Searcher” is designed to spider any web site looking for all instances of either a keyword or URL. This document will give detailed instructions for all tasks available.

This document is a detailed guide for using the “Site Searcher” application. Instructions for each of the options are located in appropriate sections of this document.

## 2 INSTALLATION PROCEDURE

In order to begin installing the "Site Searcher" double click the "Site Searcher.exe" file. The "Welcome" screen will be displayed.

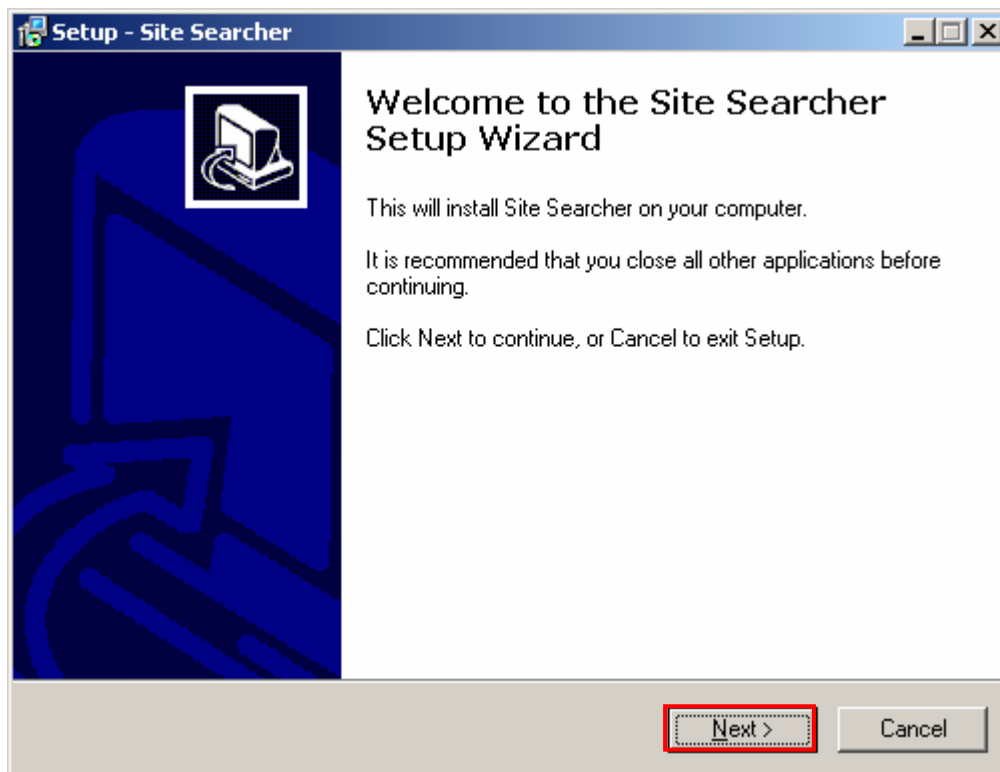


Figure 1: Installation procedure (step 1/5)

Click on the "Next" button and the screen for setting the destination location will be displayed.

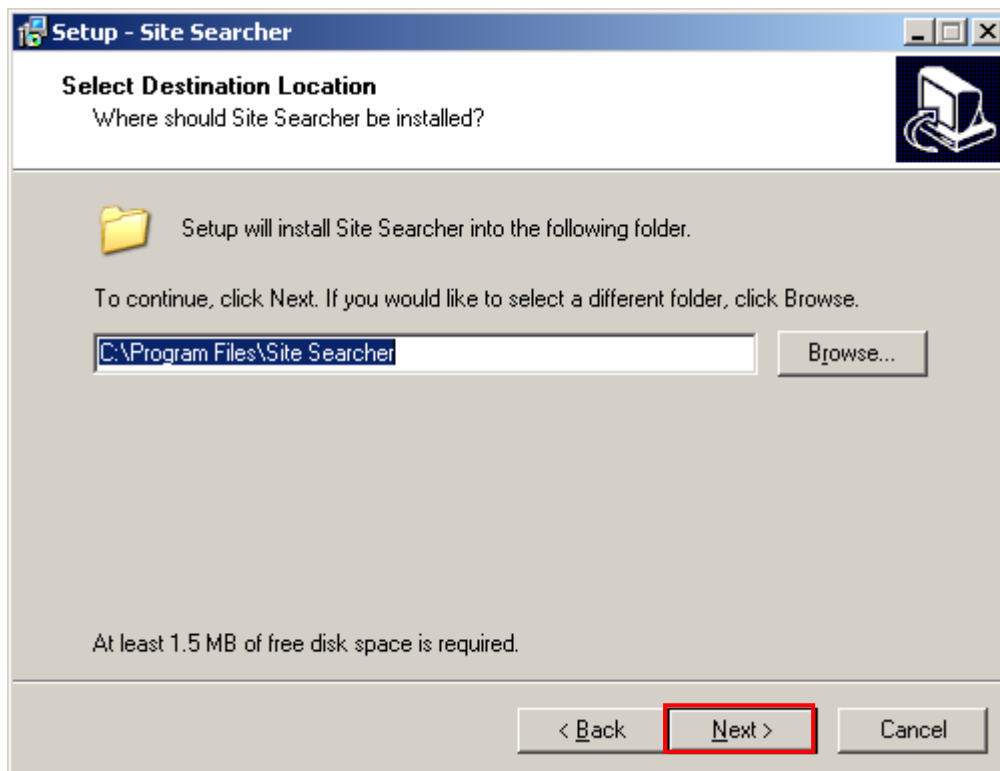


Figure 2: Installation procedure (step 2/5)

Leave the default location or choose a custom one by clicking on the “Browse” button. After setting the desired location, click on the “Next” button and the screen for selecting the desired start menu folder will be displayed.

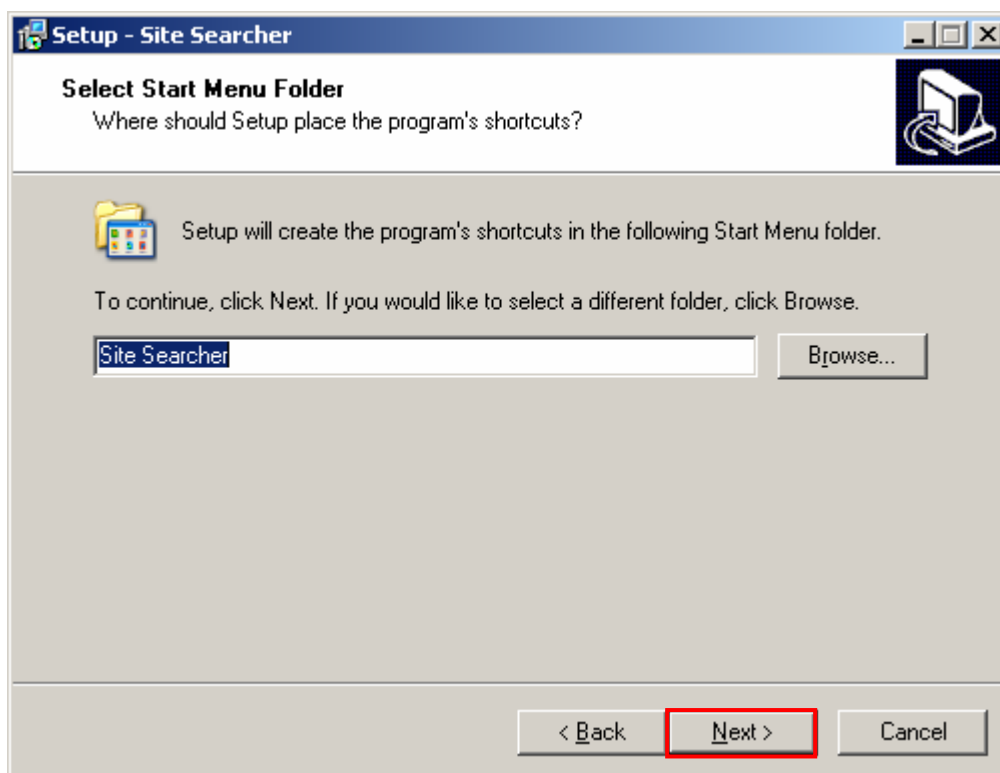


Figure 3: Installation procedure (step 3/5)

Choose the desired start menu folder and click on the “Next” button. The following screen will be displayed.

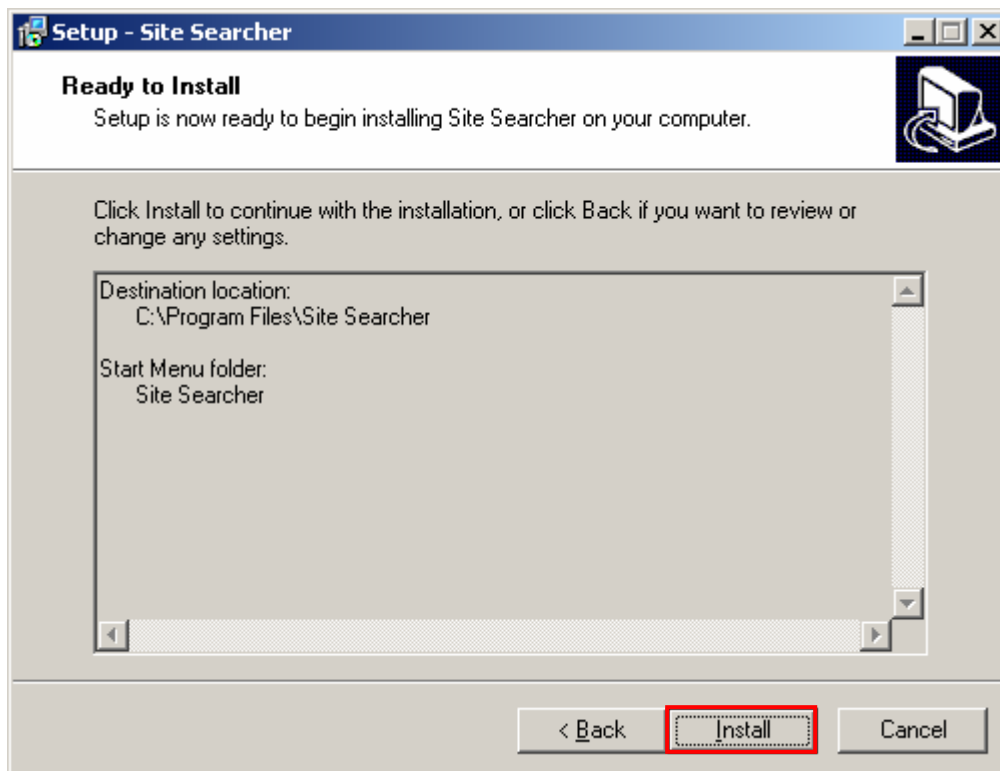


Figure 4: Installation procedure (step 4/5)

Click on the “Install” button inside this screen and the installation will be begin. After a few moments, the screen with the confirmation on the successful installation will be displayed.

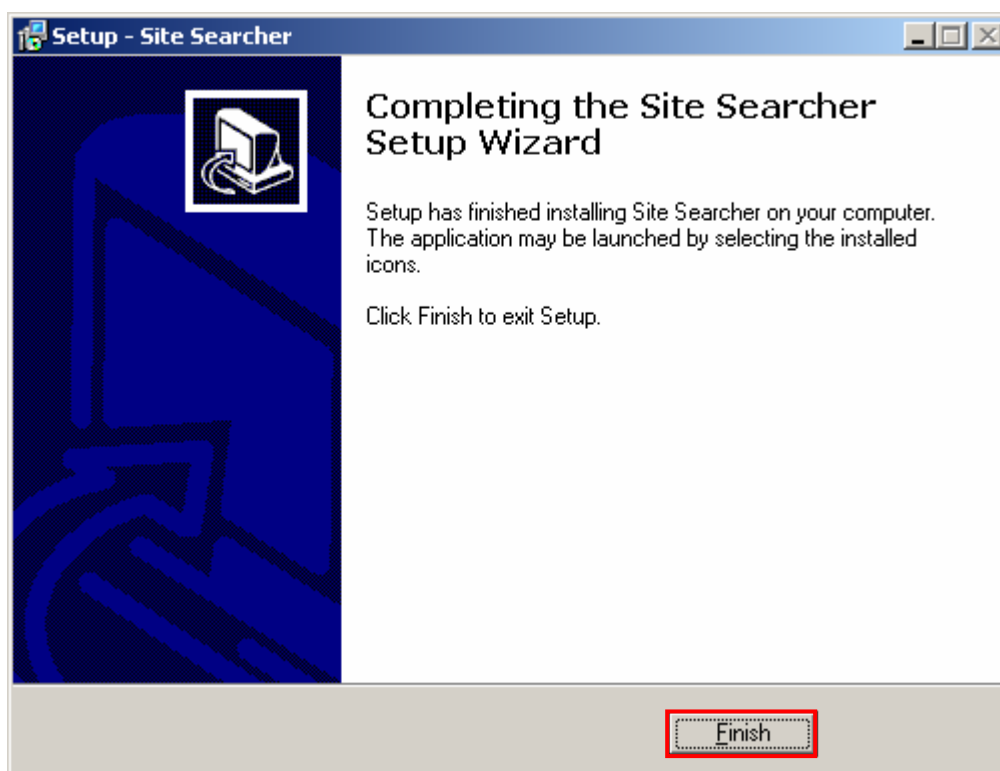


Figure 5: Installation procedure (step 5/5)

Click the “Finish” button to close the installation program.

### 3 SITE SEARCHER INTERFACE

The “Site Searcher” interface contains the following elements:

- **Toolbar**
  - **File Menu** – further information about the file menu available in section **Error! Reference source not found.**, since the file menu of the “SEO Spider” contains the same options
- **Settings** – section for setting the search options 4.1
- **Results** – section displaying the results of the search and offering options for processing those results

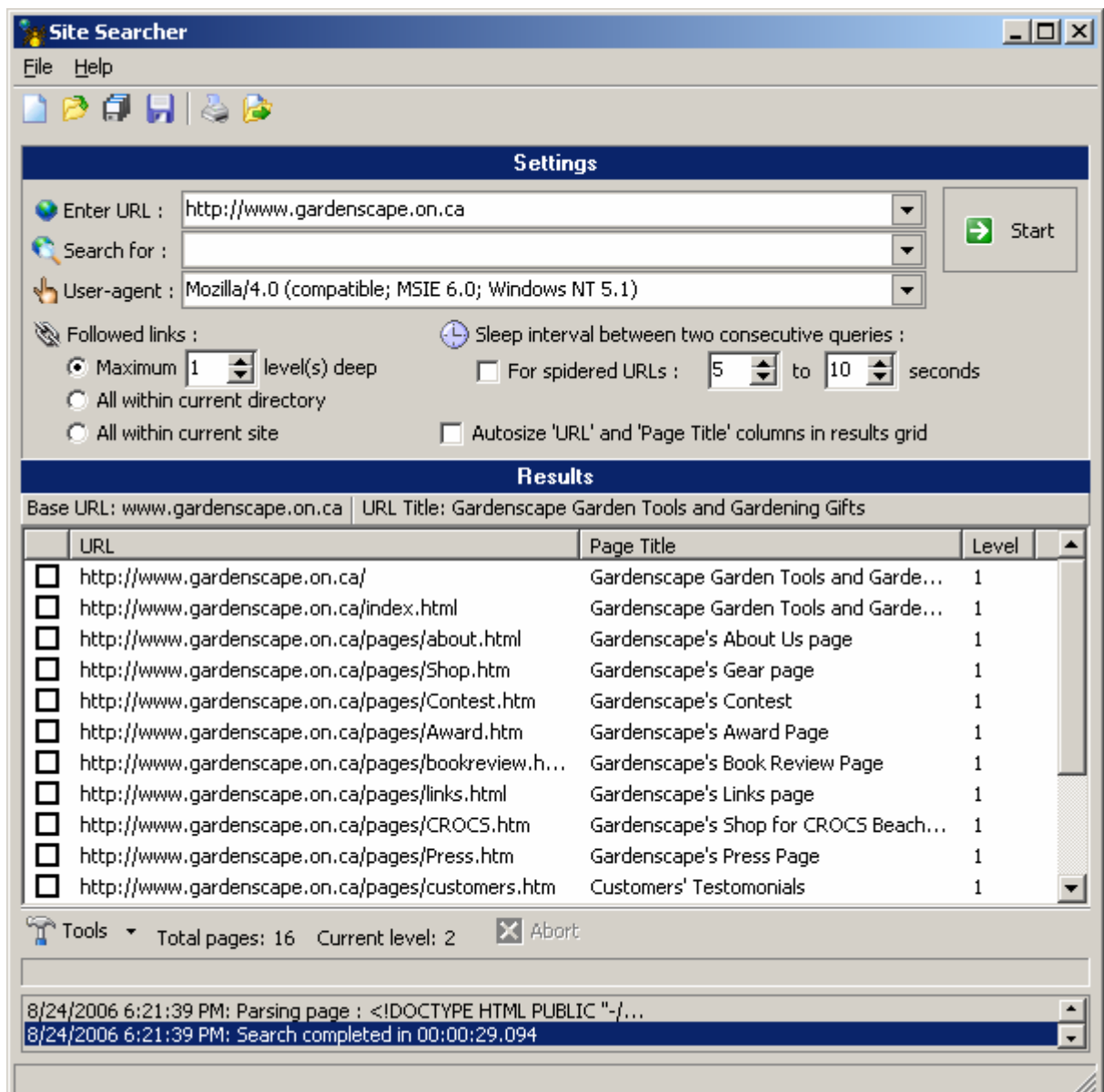


Figure 6: Site Searcher Interface

## 4 PERFORMING THE SEARCH

In order to perform the search, enter the URL inside the “Enter URL” field and click on the “Start” button.

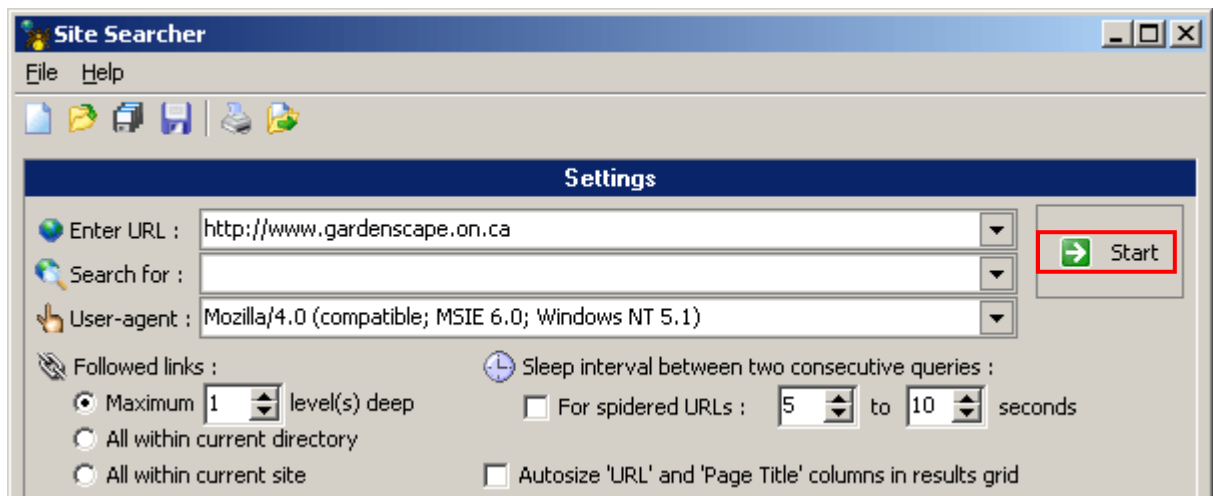


Figure 7: Performing the search

The “Site Searcher” will begin the search and you can monitor the progress inside the status window (see **Error! Reference source not found.**). Detailed instructions on how to use the search options can be found in the next section.

**Note:** the search completion is also denoted with a sound.

### 4.1 Setting the search options (Settings)

The following are the options inside of “Settings” part of the screen:

- **Enter URL** – field for entering the URL
- **Search for** – field for entering the desired keywords
- **User-agent** – field displaying user-agents
- **Followed links**
  - **Maximum** – determine how deep the “SEO Spider” should go by entering the desired level
  - **All Within current directory** – option for searching within the current directory
  - **All within current site** - option for searching within the current site
- **Sleep interval** – input fields for setting the time interval between two consecutive queries (**note:** the default values are recommended)
- **Auto size URL and Page title** – use this option so that “SEO Spider” would auto size the cells with the results (i.e. expand the cells according to the contents)



## 5 INTERPRETING THE RESULTS

This section will give detailed information on how to interpret the results once you have finished the search. The results section contains the following information:

- **Base URL** – the field displaying the base URL used in search
- **URL title** – the field displaying the title of the page
- **URL** – the column displaying the URL per result
- **Page Title** – the column displaying the title of each page
- **Level** – the column displaying the chosen level

Results			
Base URL: www.gardenscape.on.ca		URL Title: Gardenscape Garden Tools and Gardening Gifts	
	URL	Page Title	Level
<input type="checkbox"/>	http://www.gardenscape.on.ca/	Gardenscape Garden Tools and Garde...	1
<input type="checkbox"/>	http://www.gardenscape.on.ca/index.html	Gardenscape Garden Tools and Garde...	1
<input type="checkbox"/>	http://www.gardenscape.on.ca/pages/about.html	Gardenscape's About Us page	1
<input type="checkbox"/>	http://www.gardenscape.on.ca/pages/Shop.htm	Gardenscape's Gear page	1
<input type="checkbox"/>	http://www.gardenscape.on.ca/pages/Contest.htm	Gardenscape's Contest	1
<input type="checkbox"/>	http://www.gardenscape.on.ca/pages/Award.htm	Gardenscape's Award Page	1
<input type="checkbox"/>	http://www.gardenscape.on.ca/pages/bookreview.h...	Gardenscape's Book Review Page	1
<input type="checkbox"/>	http://www.gardenscape.on.ca/pages/links.html	Gardenscape's Links page	1
<input type="checkbox"/>	http://www.gardenscape.on.ca/pages/CROCS.htm	Gardenscape's Shop for CROCS Beach...	1
<input type="checkbox"/>	http://www.gardenscape.on.ca/pages/Press.htm	Gardenscape's Press Page	1
<input type="checkbox"/>	http://www.gardenscape.on.ca/pages/customers.htm	Customers' Testimonials	1
Tools ▾ Total pages: 16 Current level: 2 <input type="button" value="Abort"/>			
8/24/2006 6:21:39 PM: Parsing page : <!DOCTYPE HTML PUBLIC "-//... 8/24/2006 6:21:39 PM: Search completed in 00:00:29.094			

Figure 8: Interpreting the results

## 6 USING THE RESULTS TOOL OPTION

This section will give instructions for using the “Results Tool” option. These options are used after the search has been performed.

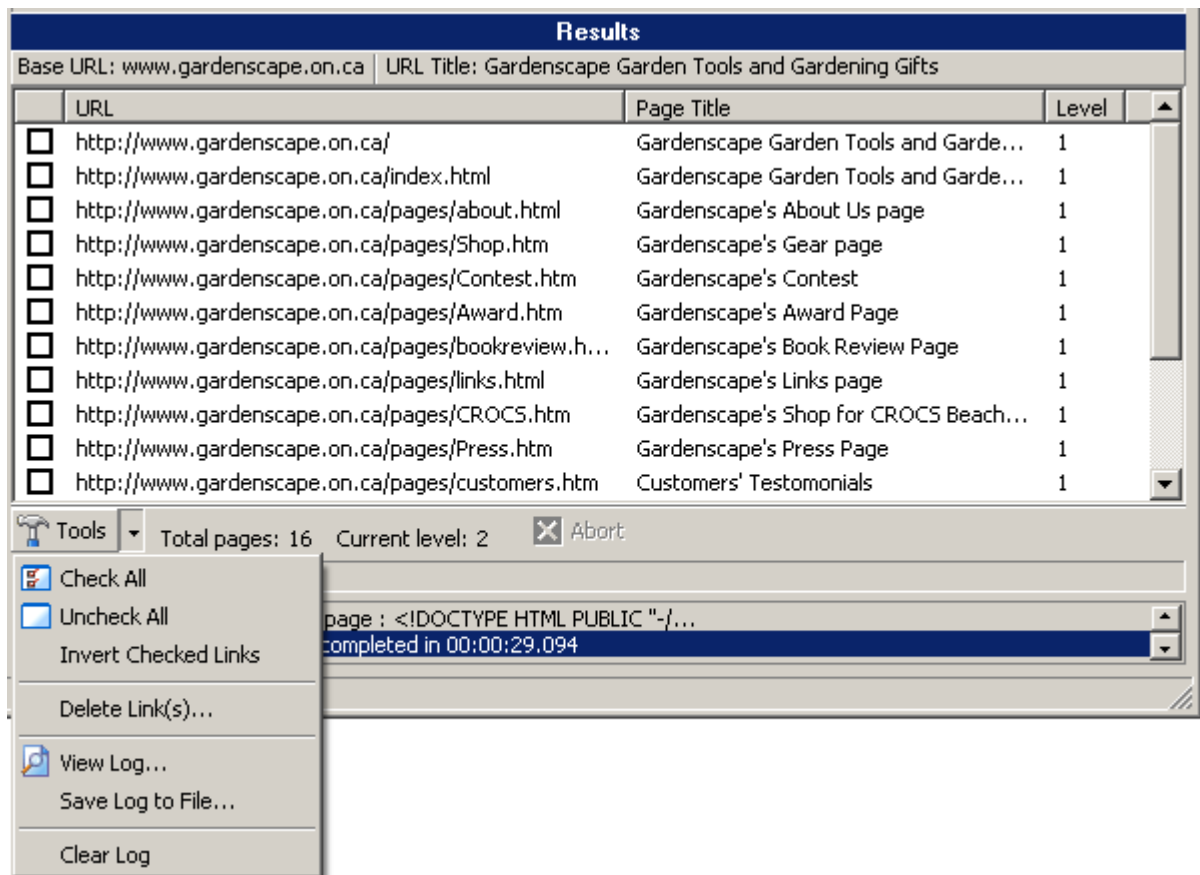


Figure 9: Using the "Results Tools" menu

The following are the options available inside the “Results Tools” menu:

- **Check All** – option for checking all sites in the results section
- **Uncheck All** - option for un-checking all sites in the results section
- **Invert Checked Links** – option for inverting the order of checked links
- **Delete Link** – option for deleting the selected link
- **View Log** – option for viewing the log of the search (see section **Error! Reference source not found.**)
- **Save Log to File** – option for saving the log to a file (see **Error! Reference source not found.** for an idea on what the file is like)
- **Clear Log** – option for clearing the log file

Using the file menu

This section will give detailed instructions on using the file menu and all available options.

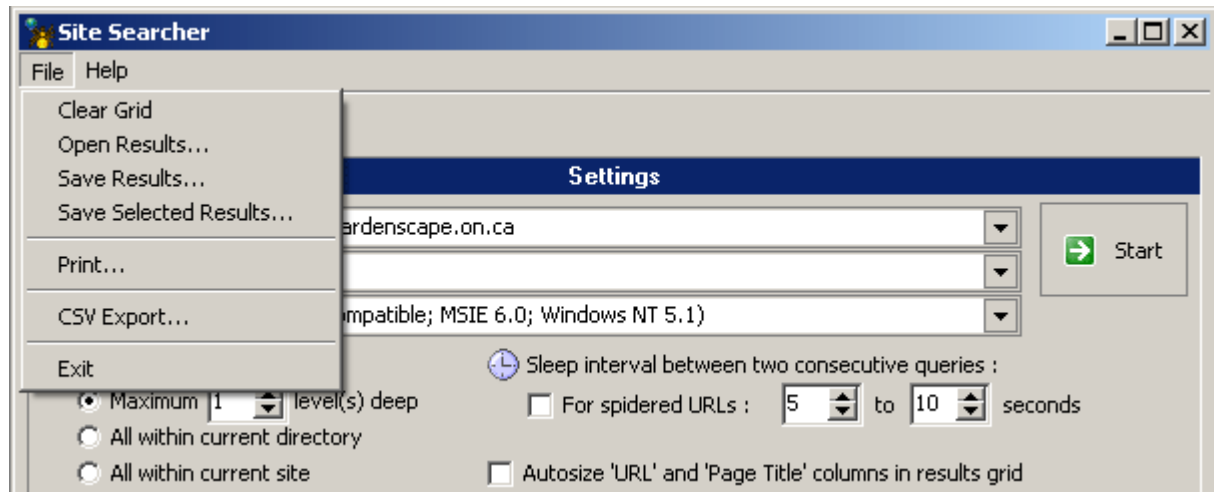


Figure 10: Using the file menu

The following are the options inside the “File” menu:

- **Clear Grid** – option for clearing the grid and starting the new search
- **Open Results** – option for opening previously saved results
- **Save Results** – option for saving the results
- **Save Selected Results** – option for saving only the selected results (see section **Error! Reference source not found.** for more details)
- **Print** – option for printing the results
- **CSV Export** – option for exporting the results into a CSV file (see section **Error! Reference source not found.** for more details)
- **Exit** – option for closing the “Site Searcher”

Alternatively, you can use the shortcuts located below the toolbar.

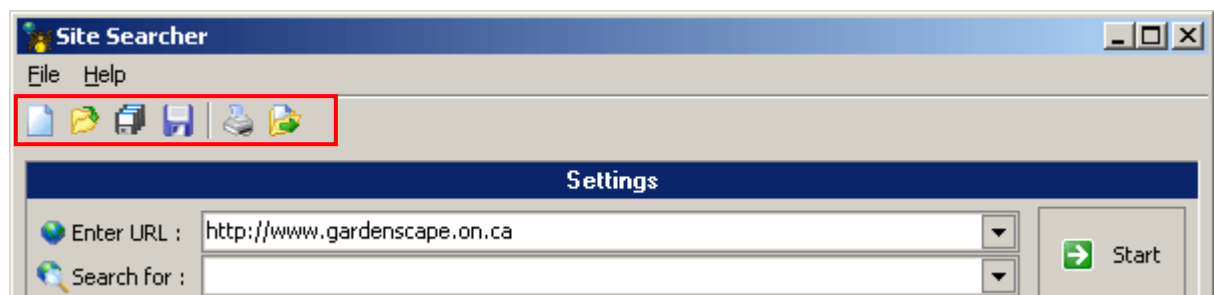


Figure 11: Using the shortcuts

Place the mouse pointer over the icon to see the function of each shortcut.